



Real value in a changing world

1100 Peachtree Street, NE

Atlanta, GA 30309
Midtown Sublease

7,779 rsf



Property Highlights

- 7,779 rsf, 15th floor
- Term through July 30, 2012
- \$23.00 – full service
- Elevator lobby exposure

Amenities

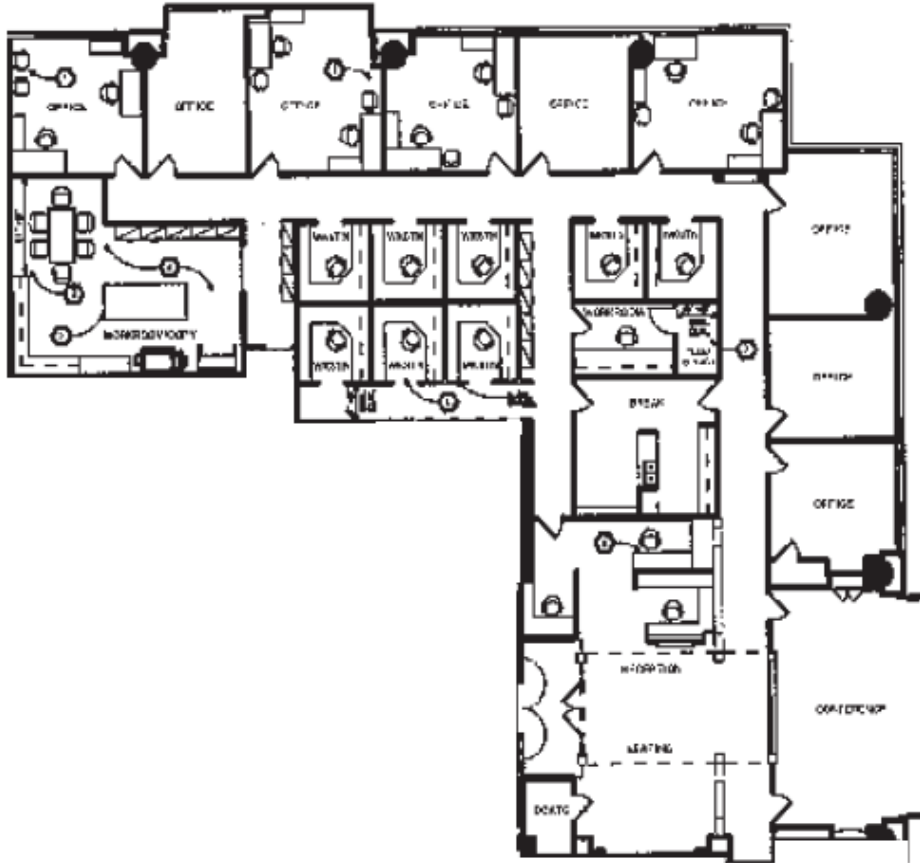
- Excellent access to I-75 / I-85
- Close proximity to restaurants, hotels, banks and Piedmont Park
- Walking distance to Arts Center MARTA Station

For information contact:

Jeff Heller
+1 404 995 2179
jeff.heller@am.jll.com

7,779 SF

5th Floor



For information contact:

Jeff Heller
+1 404 995 2179
jeff.heller@am.jll.com