



Real value in a changing world

1180 Peachtree Street

Atlanta, GA 30309

Midtown Sublease

1,700 s.f., 22nd floor



Property Highlights

- Term is negotiable
- Class A, 41-story office building in Midtown
- Great views; off-elevator access
- Full service rental rate is \$30.00/sf
- Parking 1.8 / 1,000
- Three offices on glass, open area for workstations

Amenities

- Excellent location, corner of 14th & Peachtree Sts.
- Walking distance to Piedmont Park
- Arts Center MARTA
- Fine dining
- Banking
- Woodruff Arts Center

For information contact:

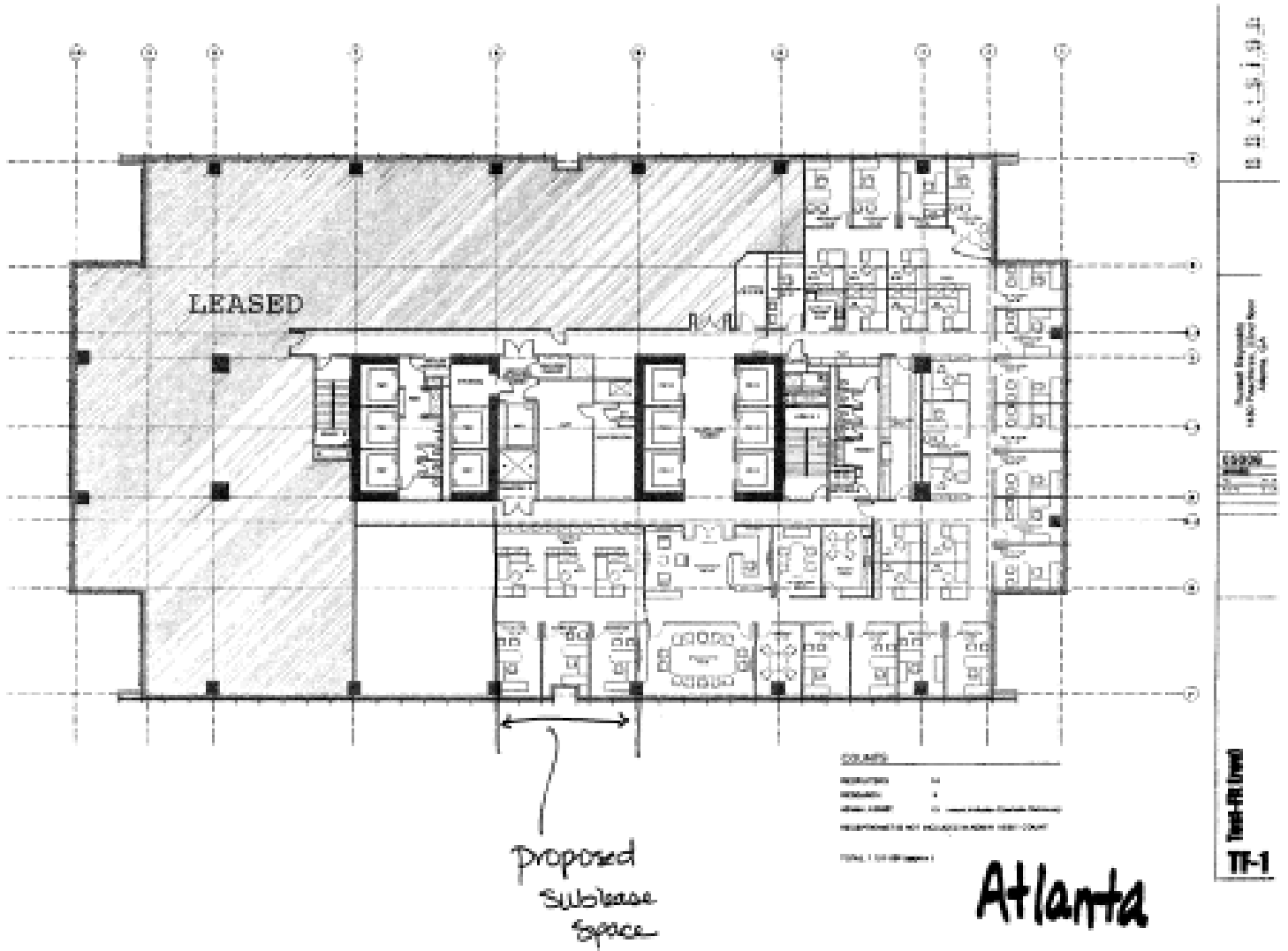
Brooke Dewey

+1 404 995 2138

brooke.dewey@am.jll.com

www.us.joneslanglasalle.com

1,700 r.s.f. Sublease on 22nd Floor 1180 Peachtree Street



For information contact:

Brooke Dewey
+1 404 995 2138
brooke.dewey@am.jll.com