

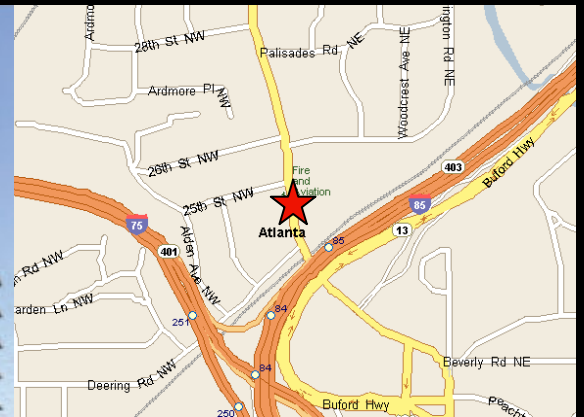
1720 Peachtree St

North Tower

Atlanta, GA 30309

Midtown Sublease

5,439 rsf total, will divide 10th floor



Property Highlights

- 5,439 rsf total, can be divided 10th floor
- Negotiable rate – please inquire
- Term through December 31, 2011
- Newly renovated, situated in the heart of the Buckhead/Midtown connector
- Furniture available
- Ample visitor parking and levels of tenant covered parking with direct access to tenant floors

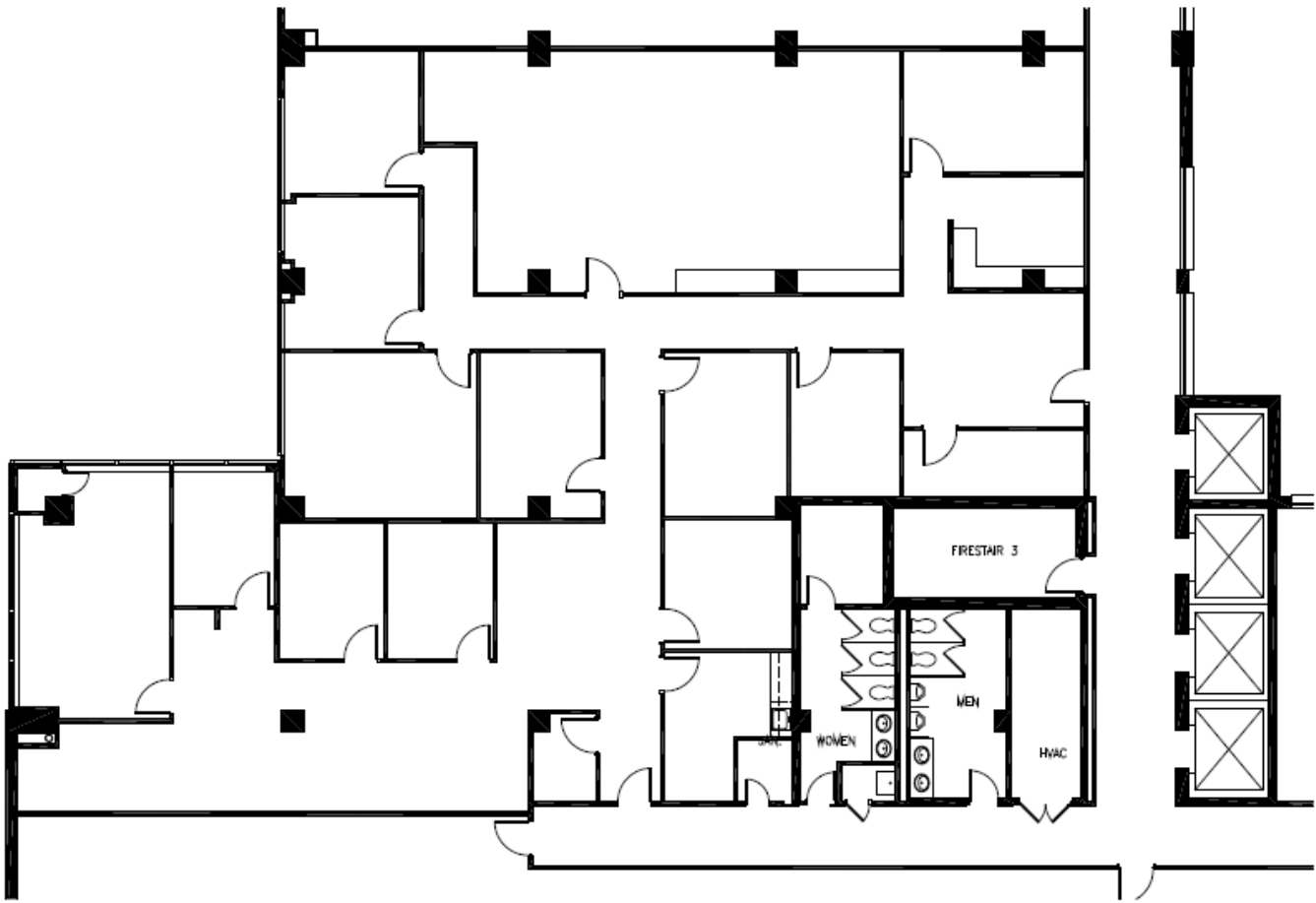
- Close proximity to I-75/I-85 connector and Buford Hwy connector
- On a major MARTA bus route


Amenities

- Restaurants and other amenities located nearby

For information contact:

Liz Love, CCIM
+1 404 995 2444
liz.love@am.jll.com



0 4 8 16 
10th Floor - Suite 1048
5,439 RSF



For information contact:

Liz Love, CCIM
+1 404 995 2444
liz.love@am.jll.com